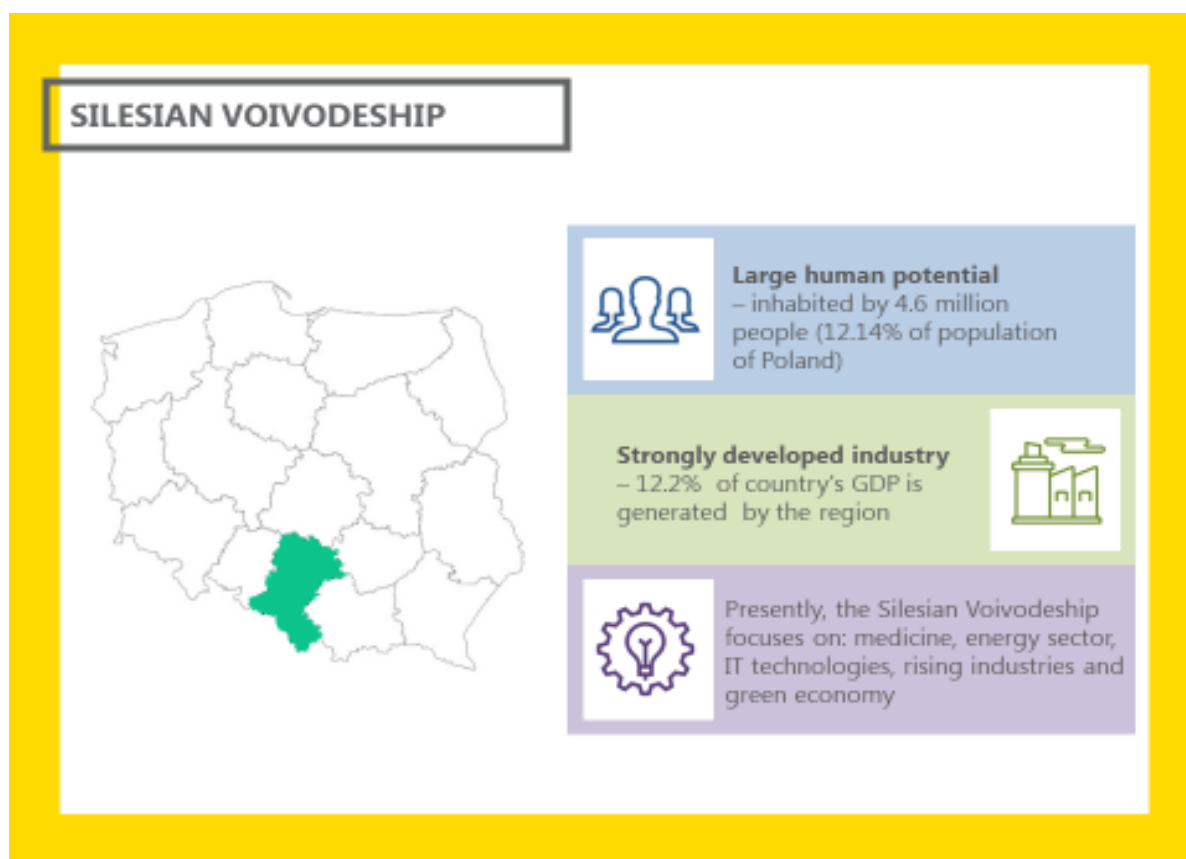


Annex to the Annual Report on implementation of ROP SV in 2022

***SUMMARY OF ANNUAL REPORT FOR 2022 FROM IMPLEMENTATION OF THE
REGIONAL OPERATIONAL PROGRAMME FOR THE SILESIAN VOIVODESHIP
2014-2020 (SUBMITTED FOR PUBLIC INFORMATION)***

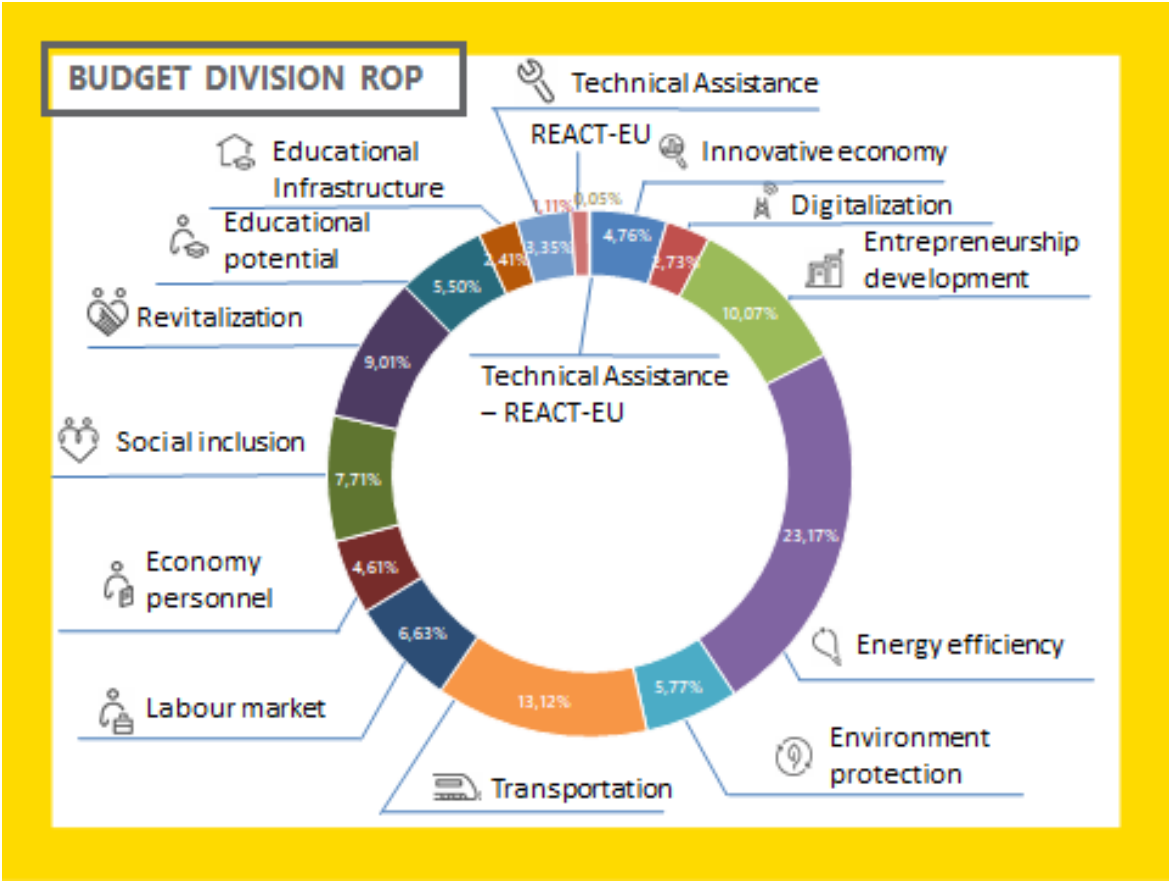
GENERAL INFORMATION



Regional Operational Programme for the Silesian Voivodeship in 2014-2020 (abbreviation: ROP SV) has the largest envelope of funds on the country scale, designated for the regional programme in the amount of nearly 3.53 billion EUR (which constitutes approx. 11% of the whole budget for all regional programmes). This sum comprises of the means from two funds: European Regional Development Fund and European Social Fund. Thanks to this realization

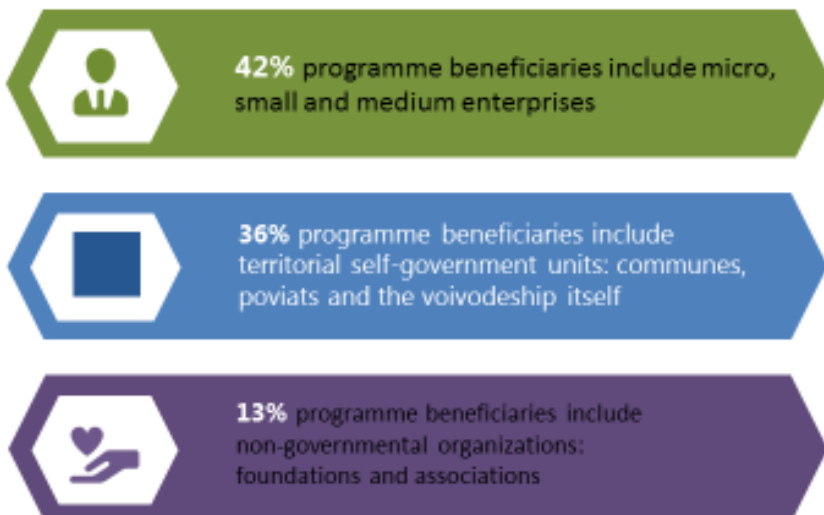
of comprehensive projects consisting not only of infrastructural investments but also social ventures addressed directly to the inhabitants of the region such as is possible.

The specificity of the regional programme is determined by the fact that it is governed by the self-government at the voivodeship level, while the funds available support its development while considering its specific needs. On the basis of such diagnosis, fifteen so called priority axes have been selected, that is areas of support in which the applicants may realize their projects under ROP SV.



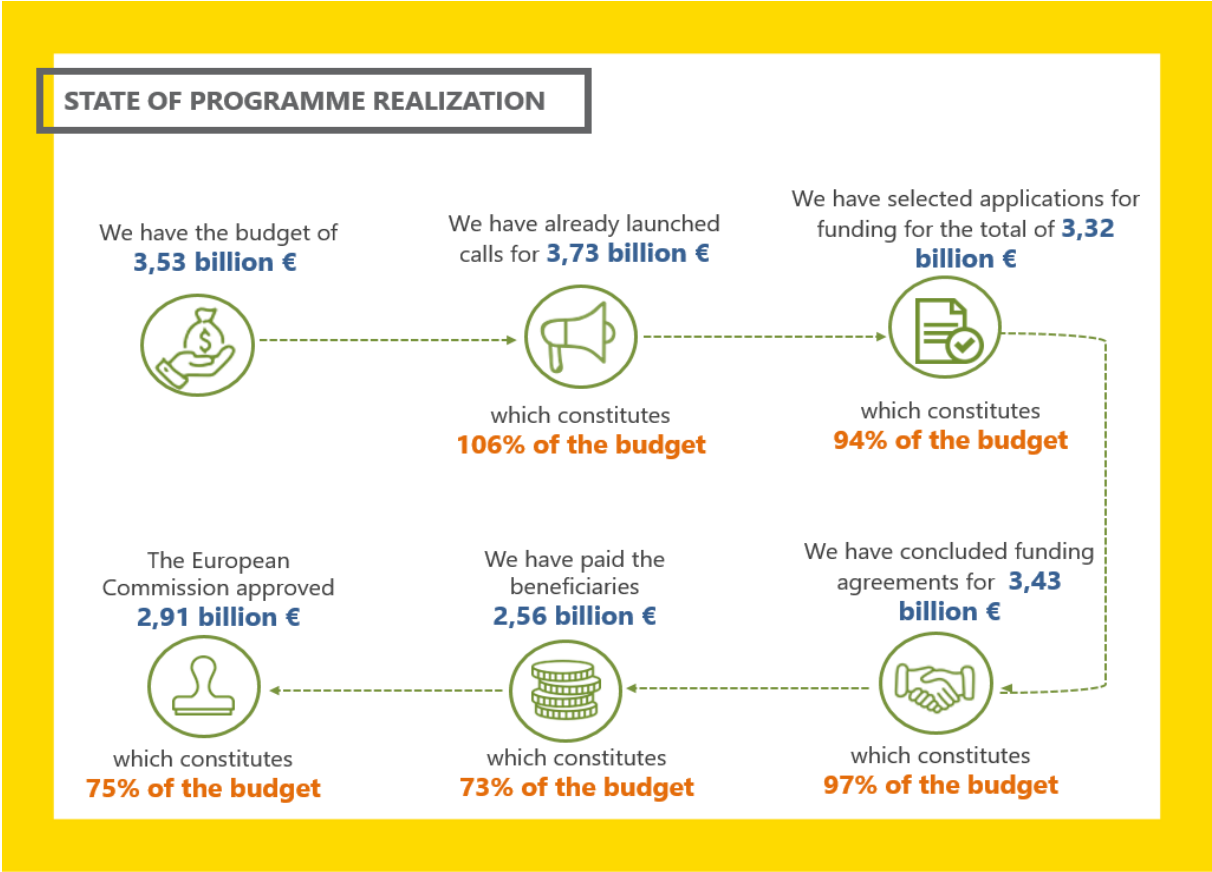
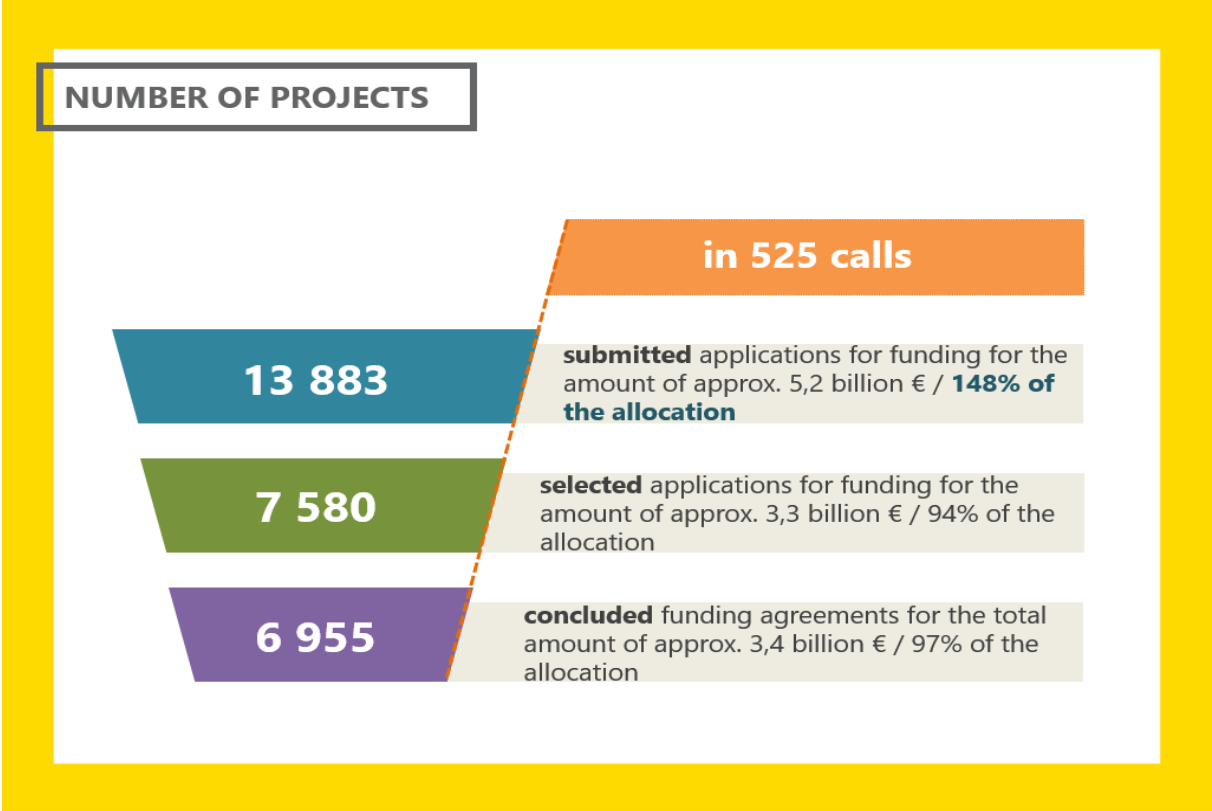
Everyone is free to apply for the funds except for natural persons who do not carry out economic activity, that is private persons. The main beneficiaries of the programme are entrepreneurs, units of territorial self-government, foundations and associations. All inhabitants however benefit from the European funds, through participating in the projects or using the infrastructure.

KEY PROGRAMME BENEFICIARIES



The body responsible for coordinating and managing the programme is the Silesian Voivodeship Administration, whilst the majority of duties related to servicing the programme has been entrusted to three departments of the Marshal Office of the Silesian Voivodeship.

PROGRESS OF PROGRAMME REALIZATION – STATUS AT THE END OF 2022



SELECTED EFFECTS



almost 54 thousand
unemployed
covered by support



over 70 thousand
employed
covered by support



almost 148 thousand
pupils covered by
support



3 118 supported
enterprises



179 ha of areas
covered by revitalization



76 entities of rescue squads
equipped in tools



138 interchange
nodes



486 new buses and
trams